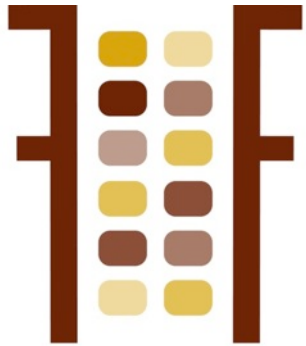




Bob Kuylen
Vice President

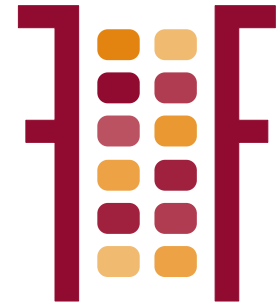


Agraria Restaurants



**FOUNDING
FARMERS**

true food & drink



POTOMAC'S
**FOUNDING
FARMERS**

true food & drink



Five years ago our doors at Founding Farmers opened

- On average, more than 1,200 guests a day dine in a Founding Farmers restaurant
- Served guests from every state in the U.S. and from more than 23 different countries
- Founding Farmers remains one of the most-often reviewed restaurants in the entire U.S.
- Our story has been featured or included in more than 500 different print, online and TV/video mentions including magazines, newspapers, websites, blogs, Food Network, CNN, Voice of America and many more.*
- Over 11,000 guests visit per week.
- Generating over \$300,000 in sales per week.
- Highest requested restaurant on OpenTable



FOUNDING FARMERS

True food & drink







Farmers Fishers Bakers

- Re-opened after flooding with a new name on November 13, 2012.
- Capacity to seat 290 people.
- Over 6,600 guests visit per week.
- Located on Georgetown Waterfront.
- Generating over \$230,000 in sales per week.

MoCo's Founding Farmers Potomac, Maryland

- Over 7,500 guests visit per week
- Generating almost \$200,000 in sales per week.

FOUNDING FARMERS



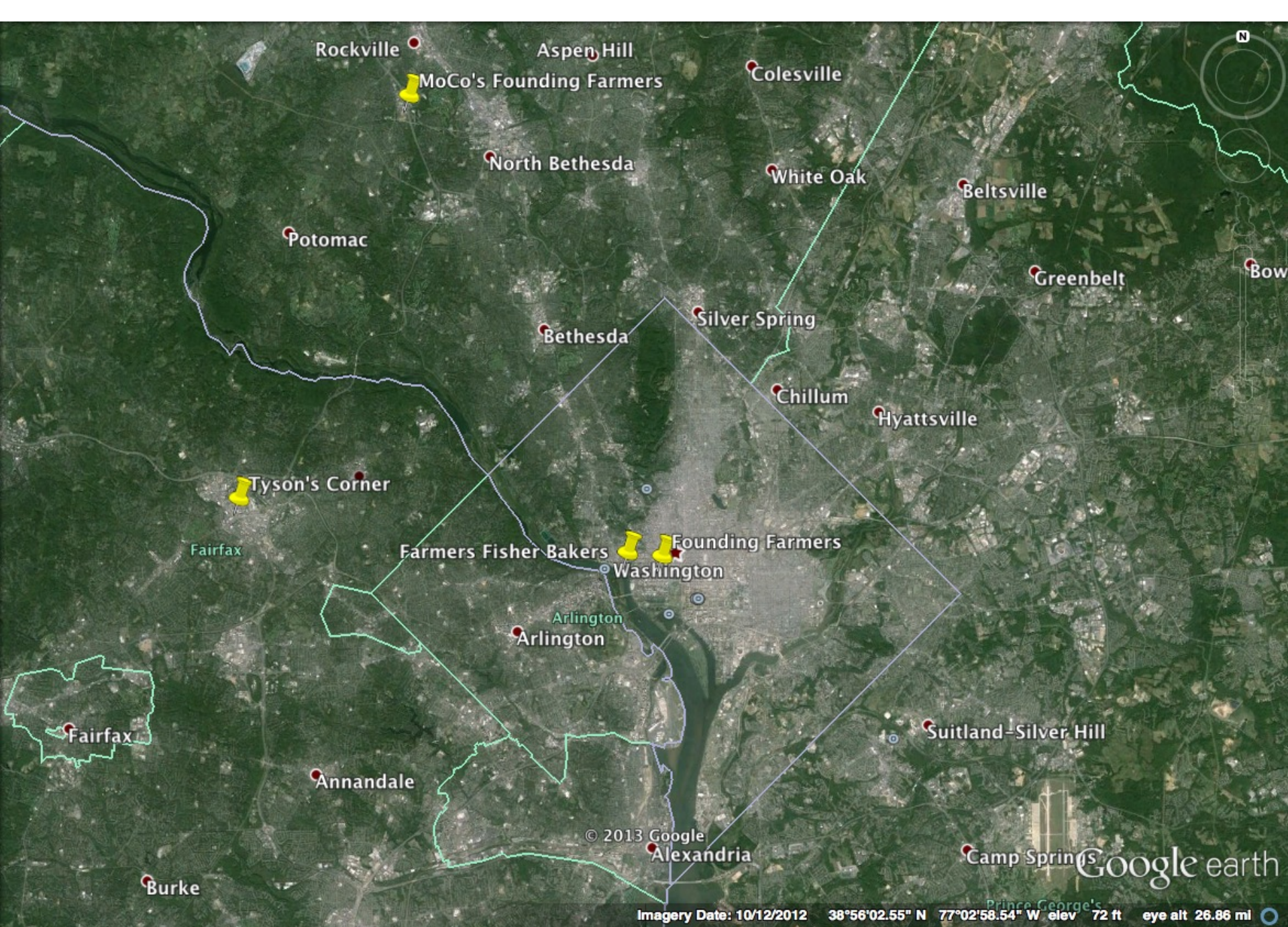






Tysons Corner

- Expected to open this Fall
- Walking distance from Tysons Corner Metro Station opening this year on the new Silver line.
- Fairfax county, Virginia
- Located near the largest shopping center in the Baltimore – Washington area.



Rockville

Aspen Hill

Colesville

MoCo's Founding Farmers

North Bethesda

White Oak

Beltsville

Potomac

Greenbelt

Bow

Bethesda

Silver Spring

Chillum

Hyattsville

Tyson's Corner

Farmers Fisher Bakers

Founding Farmers

Washington

Fairfax

Arlington

Arlington

Suitland-Silver Hill

Fairfax

Annandale

© 2013 Google

Alexandria

Camp Springs

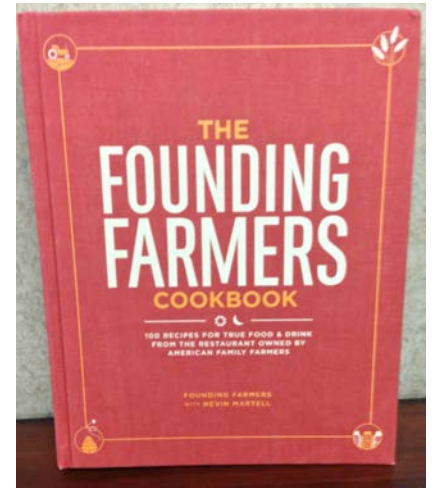
Google earth

Burke

Imagery Date: 10/12/2012 38°56'02.55" N 77°02'58.54" W elev 72 ft eye alt 26.86 mi

Future for Agraria

- Additional Restaurants
- Expand in the Retail Market
 - Currently sell Founding Farmers cookbooks
 - Distilled Products
- Partnership with Copper Fox Distillery
 - Rye Whiskey (2009)
 - Smoked apple and cherry woods and malted barley sourced locally
 - Gin (2013)
 - Botanicals include juniper berries, cardamom, anise, orange peel, ginger, angelica, lemon grass, and others.





Affiliated with the ND Farmers Union



Bob Kuylen
Director



- **Founded in 1998**
- **250 members**
- **\$50 membership fee**
- **Mission:** Increase income opportunities to members through premium IP markets
- **Two major programs**
 - **Non-GMO soybeans**
 - **Hard white spring wheat**





Hard White Spring Wheat

- ND Mill & Elevator
- Premium to Growers
 - .35/bu +.20/bu
 - 14% HRS Price
- Products
 - Whole Grain
- Alpine
 - AgriPro HWSW Variety



AgriPro

Superior genetics...locally grown

ALPINE



**DAKOTA PRIDE
cooperative**



IP Containerized Shipments

Opportunities:

- Determined by price and availability
- **Packaging:**
 - Bags, Totes or Bulk
- **Target markets include:**
 - Millers & end-users





Non-GMO Soybeans

- **Premium to Growers**
- **Pull Marketing vs. Push Marketing**
- **Asian Countries**
- **SB& B Partnership**
- **Cleaning Facility (IAP)**
- **Managing Risk Factors**





06/11/2009



06/11/2009

SAFETY WARNING
DO NOT OPERATE
UNLESS YOU ARE
PROPERLY TRAINED
AND CERTIFIED
TO DO SO.
READ AND UNDERSTAND
ALL INSTRUCTIONS
BEFORE OPERATING.
©2008 WALKER
MATERIAL HANDLING
EQUIPMENT CO.

ORIGIN: DAKOTA PRIDE COOPERATIVE
JAMESTOWN, ND USA

KIND: FOOD GRADE SOYBEANS-2008

VARIETY: 91NH10

LOT NO: DPPRS09

NET WT: 30 KG

Freight Issues





Identity Ag Processing

Casselton, ND



- **State-of-the-Art cleaning facility**
- **Cleaning & processing (22,000MT/YR)**
- **Bulk, totes & bags**
- **Casselton, ND**
- **Built in 2004**
- **4 FT employees**
- **8 PT employees**







Identity Ag Processing

Bloomer, WI



- **State-of-the-Art cleaning facility**
- **Cleaning & processing (25,000 MT/YR)**
- **Bulk, totes & bags**
- **Bloomer, WI**
- **Built in 2010**
- **4 FT employees**
- **4 PT employees**



Identity Ag
PROCESSING





Thank You!